



# SKETCH

## CLASSROOM™

### THE IDEAL CLASSROOM SETUP.

Create a compound gear train to meet the needs for the system. Calculate the final gearing ratio of the system. Measure and document the speed of the elevator. \*Leave more than gear ratios\*



#### Maximize Student Access

- Multiple printers that boost student growth and exposure
- Increased classroom engagement without slowing down the learning process
- The most reliable classroom 3D Printing platform
- NIOSH-tested classroom-safe materials



#### Lower the Curriculum-Planning Barrier

- Access 600+ lesson plans across various grade levels & subjects
- Join the largest 3D printing community of educators
- Curated lesson plans created by MakerBot Certified Educators



#### Develop Professionally, Gain Confidence

- ISTE-certified 3D printer training for both teachers and students
- 3D Printing-Integrated Curriculum training for teachers with applicable PD credit
- Real World Problem Solving training through Design Thinking and 3D Printing

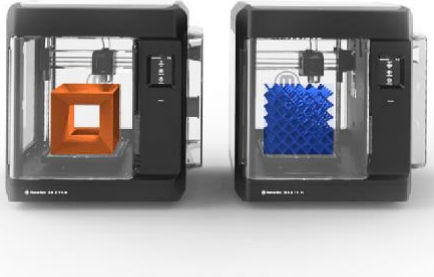


#### Seamless Classroom Management

- MakerBot Cloud™ integration - Manage students' projects with a cloud-based print queue
- Print from TinkerCAD™ integration
- Industry leading support



## MAKERBOT SKETCH CLASSROOM



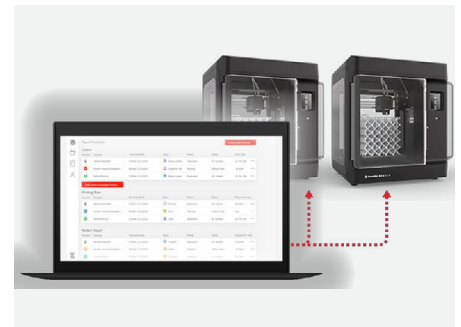
### DUAL PRINTER SETUP

Get started with two printers and complete your classroom printing faster, make 3D printing more accessible to your students and boost the opportunities for student innovation.



### THE MAKERBOT CERTIFICATION™ PROGRAM

More than just learning about printer operation. Certify your students in real world problem solving through design thinking and 3D printing. Get access to a full set of interactive content, projects, quizzes and exams developed by MakerBot Certified Educators.



### MAKERBOT CLOUD™

Make the classroom 3D printing experience even easier with our cloud-based, 3D printing file management software. Students submit their designs without issue, and teachers queue up their classroom prints with ease.

## MAKERBOT SKETCH CLASSROOM FEATURES



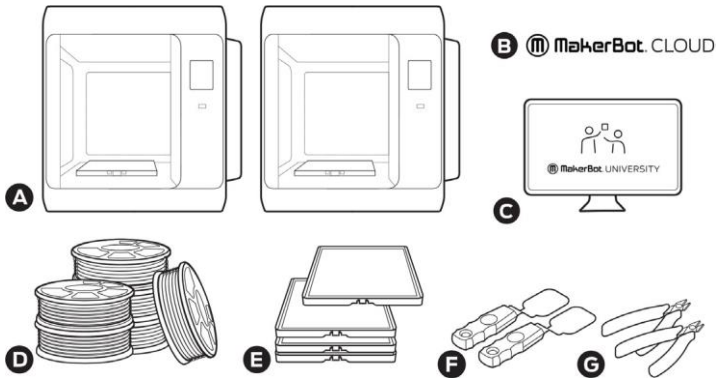
Heated and Flexible Buildplate



Touch Screen Controls



Enclosed Chamber and Particulate Filter



### WHAT'S IN THE BOX

- A** 2 MakerBot Sketch Desktop 3D Printers
- B** MakerBot Cloud™ [coming soon]
- C** 2 Teacher Certification Licenses  
10 Student Certification Licenses
- D** 6 PLA Spools (2 large blue, 2 large yellow, 2 small grey)
- E** 4 Flex build plates
- F** 2 Spatulas and
- G** 2 Snips

# SKETCH CLASSROOM™

### THE IDEAL CLASSROOM SETUP

Learn more at [MAKERBOT.COM/SKETCH](https://www.makerbot.com/sketch)

